

## Three Phase Transformer Pad - Bangor Hydro Padmount - 1000 KVA to 2000 KVA

Shallow Item # 5740 – WT: 14,377 lbs.

Deep Item # 5741 – WT: 16,258 lbs

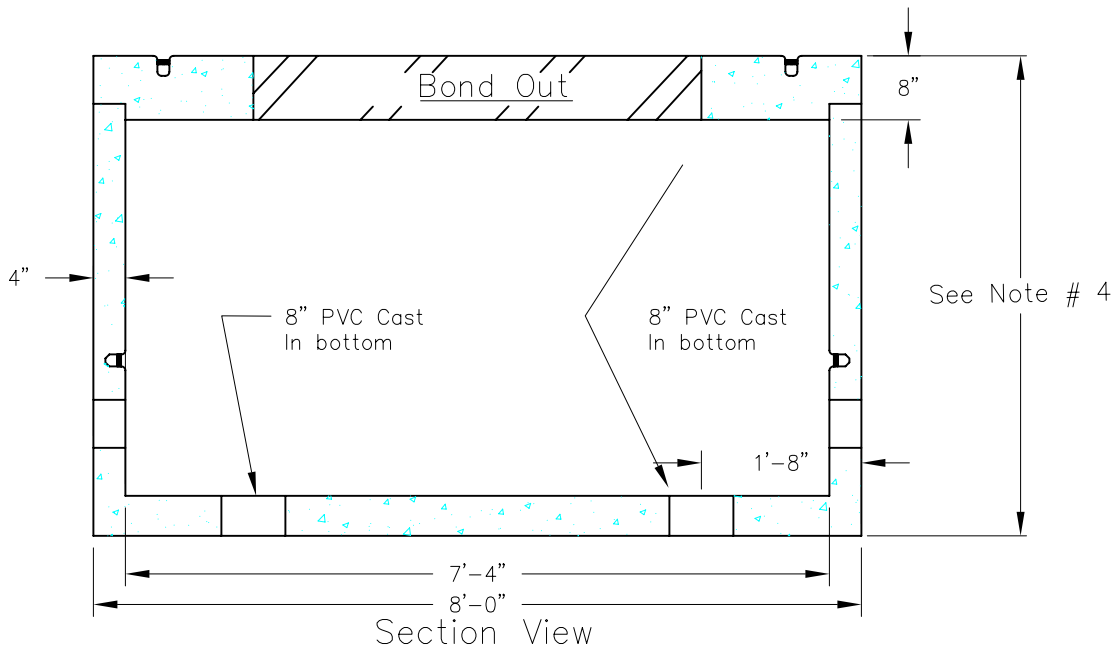
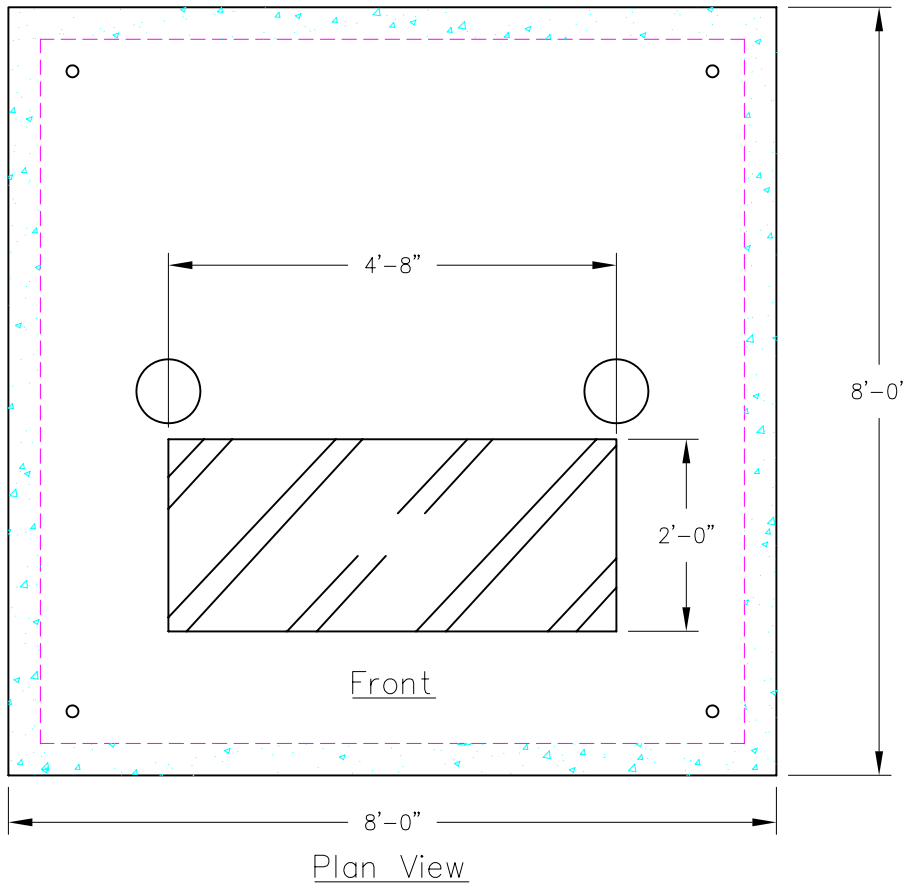
### General Notes

#### Concrete Specifications:

- 1) 4000 psi after 28 days with 4%–6% air
- 2) Reinforcing is grade 60
- 3) Designed for H-20 Wheel Loading
- 4) Conforms to Bangor Hydro Specifications.

#### Design Notes:

1. S3/4;" anchors for 3/4" eye bolts.(A) 4 @ 90° angles for cable pulling.(B) 4 for lifting cover.
2. Provide cable openings at base of well as needed.
3. "Front" denotes the side on which the access doors are located.
4. Overall height may be shortened per B.H.E. T&D engineering approved. Two preferred sizes used by Bangor Hydro are:
  1. Shallow unit 52" High
  2. Deep unit 65" High



# American Concrete Industries

1022 Minot Ave. Auburn, ME / 1717 Stillwater Ave. Veazie, ME  
Tel: 207-784-1388 / Tel: 207-947-8334

Last Revised:  
04/06

PG. XXX