



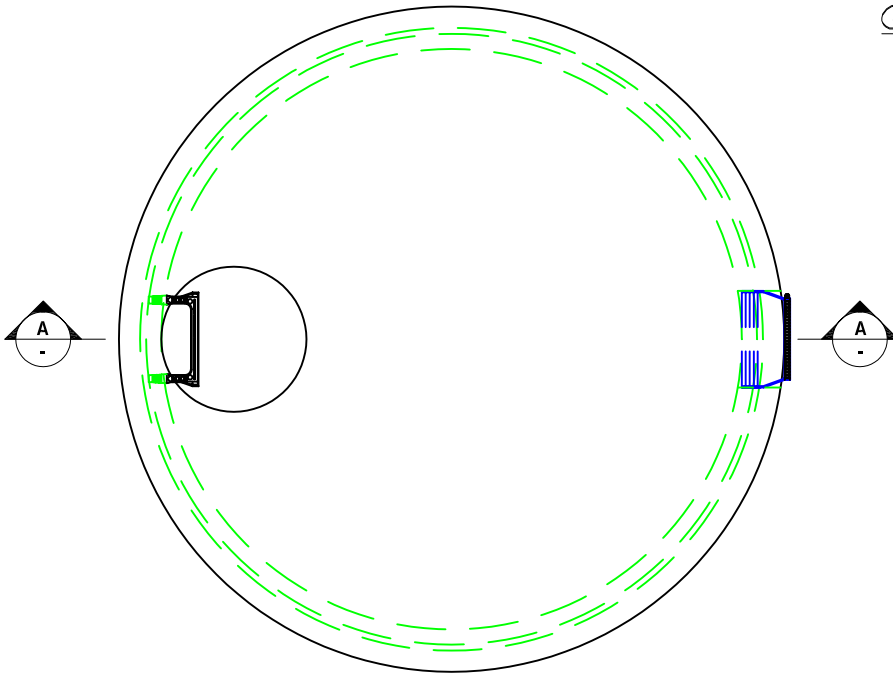
# American Concrete Industries

8'  $\phi$  Manhole w/ Flat-Top Cover

Catalog Section: commercial\manholes\8'  
Layout Name: Catalog Vertical

## General Specifications

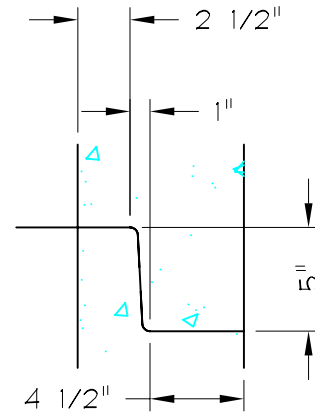
- 1) Concrete 5000 psi after 28 days
- 2) Designed for H-20 wheel loading
- 3) Conforms to ASTM-C478 specifications
- 4) Reinforced to 0.24 in<sup>2</sup>/lf
- 5) Manhole joints sealed w/(2) strips of butyl rubber



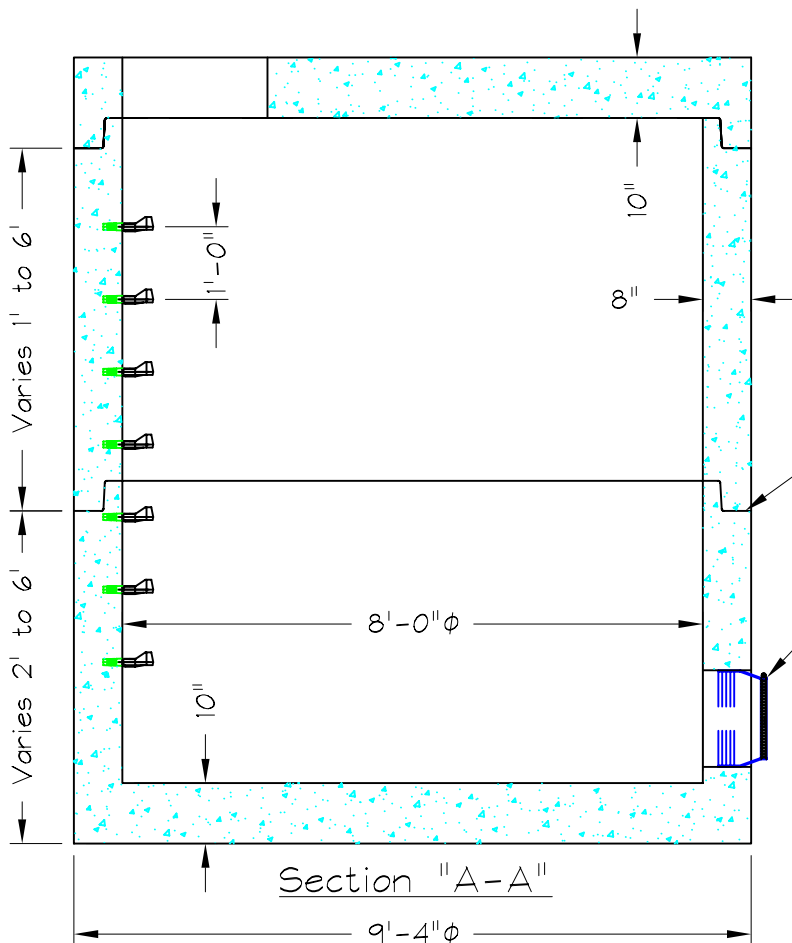
8'  $\phi$  Manhole Plan View

## Options for Manholes

- Exterior Damproofing
- Plastic Steps 12" O.C.



Joint Detail



Section "A-A"

Manhole joints should be sealed with (2) 1"  $\phi$  butyl rubber sealant strips.

All rubber sleeves are supplied with stainless steel straps for sealing over the pipe.

8' $\phi$ MH	Approx. Weights
Flat Top	8,086#
Barrel	2,215#/VF
Base	6,074#
gal/ft	376 gal/ft

American Concrete Industries  
1022 Minot Ave. Auburn, ME / 1717 Stillwater Ave. Veazie, ME  
Tel: 207-784-1388 / Tel: 207-947-8334  
Fax: 207-783-4039 / Fax: 207-947-3580

Drawing Name: 8ft\_manhole\_spec\_sheet.dwg

Drawing Date: 06/10/2006

Latest Revision: 2.0 Date: 06/10/2006