

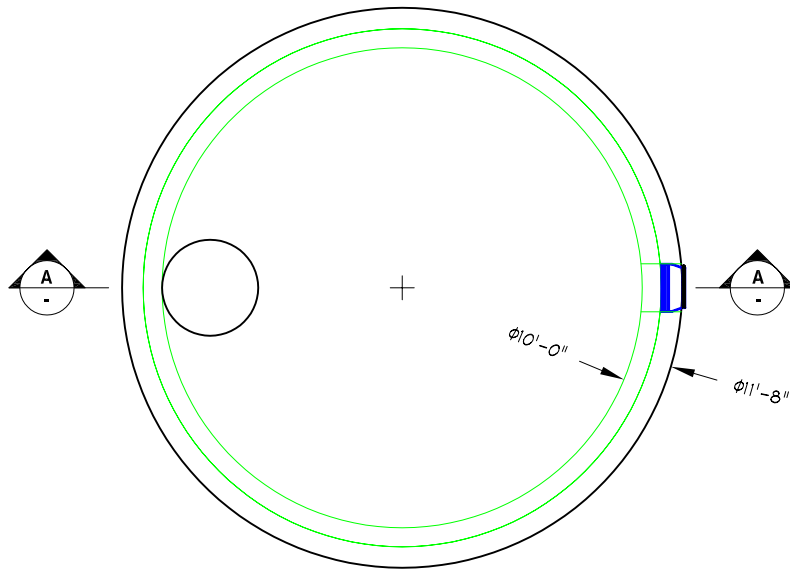


American Concrete Industries

10' ϕ Manhole w/ Flat-Top

Catalog Section: Commercial\manholes\10'

Layout Name: Catalog Vertical



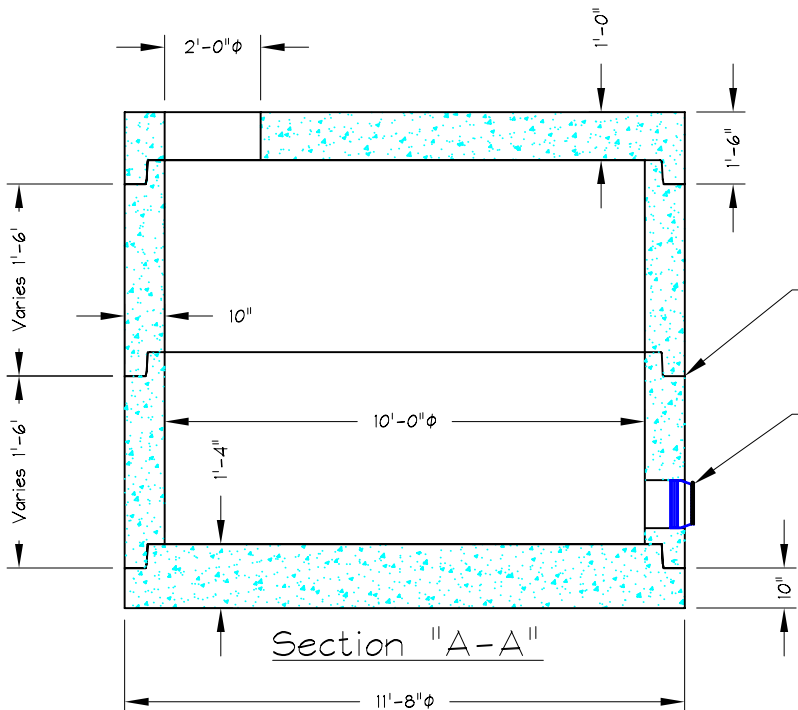
10' ϕ Manhole Plan View

General Specifications

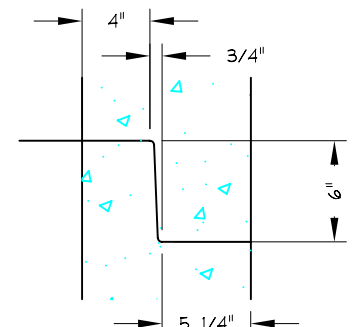
- 1) Concrete 5000 psi after 28 days
- 2) Designed for H-20 wheel loading
- 3) Conforms to ASTM-C478 specifications
- 4) Reinforced to 0.24 in²/lf
- 5) Manhole joints sealed w/(2) strips of butyl rubber

Options for Manholes

- Exterior Dampproofing
- Plastic Steps 12" O.C.



Section "A-A"



Joint Detail

Manhole joints should be sealed with (2) 1" ϕ butyl rubber sealant strips.

All rubber sleeves are supplied with stainless steel straps for sealing over the pipe.

10' ϕ MH	Approx. Weights
Flat Top	17,000#
Barrel	4,255#/VF
Base	20,200#
gal/ft	587.5 gal/ft

American Concrete Industries
 1022 Minot Ave. Auburn, ME / 1717 Stillwater Ave. Veazie, ME
 Tel: 207-784-1388 / Tel: 207-947-8334
 Fax: 207-783-4039 / Fax: 207-947-3580

Drawing Name: 10ft_manhole_spec_sheet.dwg

Drawing Date: 02/08/2003

Latest Revision: 2.0 Date: 10/17/2006